

Legend

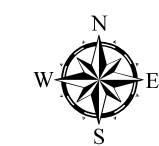
Rail Network Line

Zone

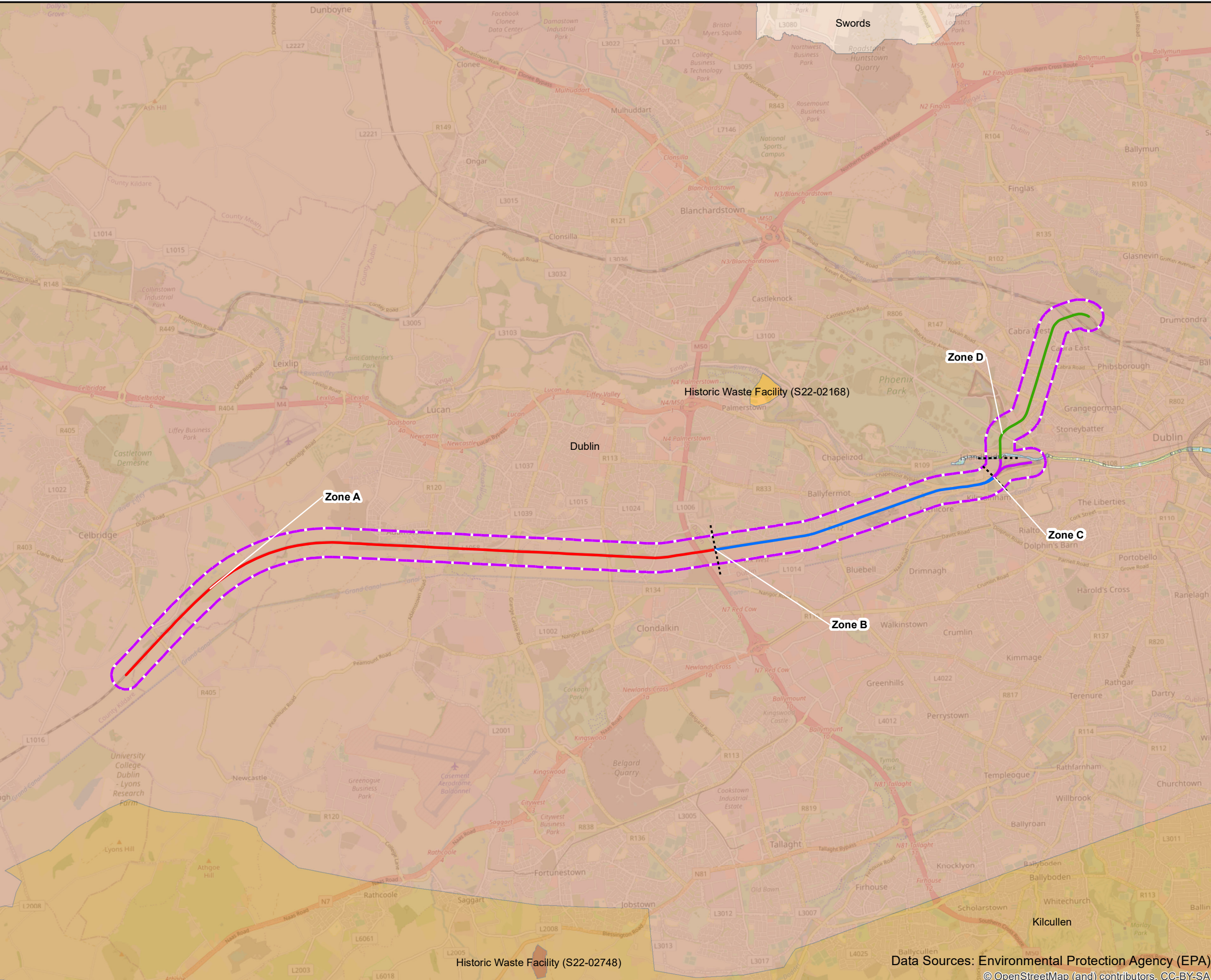
- Zone A: from Hazelhatch & Celbridge Station to Park West & Cherry Orchard Station
- Zone B: Park West & Cherry Orchard Station to Heuston
- Zone C: Heuston Station and Yard
- Zone D: From Liffey Bridge to Glasnevin Junction
- Zone Boundaries
- 250m Buffer Zone

WFD Groundwater Bodies (Cycle 3)

- Dublin
- Historic Waste Facility (S22-02168)
- Historic Waste Facility (S22-02748)
- Kilcullen
- Swords

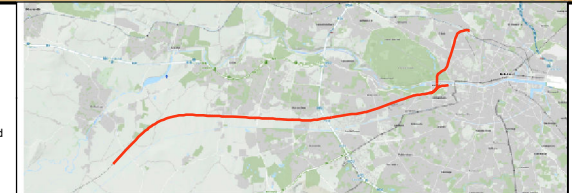


Data Sources: Environmental Protection Agency (EPA)
© OpenStreetMap (and) contributors, CC-BY-SA



© Irish Rail (2022). This drawing is confidential and the copyright in it is owned by Irish Rail. This drawing must not be either loaned, copied or otherwise reproduced in whole or in part or used for any purpose without the prior permission of Irish Rail.

© Ordnance Survey Ireland and government of Ireland. All O.S. Data used for plans are printed under: "Copyright Ordnance Survey Ireland" Survey No. 0038722. (OSi Aerial Data or OSi Lidar Data) & Survey No. 2022/OSi_NMA_180 (OSi Vector Data). All elevations are in metres and relate to OSi Geoid Model (OSGM02) Malin Head as defined by existing Project Control. All Co-ordinates are in Irish Transverse Mercator Grid (ITM) as defined by OSi active GPS station Tallaght College (TLLG).



Rev	Date	Drn	Chk'd	App'd	Description
v02	22/10/2022	IP	EH	CR	Groundwater Bodies
v01	31/03/2022	IP	EH	CR	Groundwater Bodies

Client Iarnród Éireann Irish Rail		Engineering Designer ATKINS Member of the SNC-Lavalin Group		
Date 08/11/2022		Supported by RPS		
Scale 1:65,000 @ A3	Drawn IP	Checked EH	Approved CR	
Project Code 5195886	Issuer TTA	QMS Code		

Project Title DART + SOUTH WEST	
Drawing Title Figure 11.1: Groundwater Bodies	
Drawing File Name DP-04-23-DWG-EV-TTA-23745	Version v02
Status S3	

DO NOT SCALE USE FIGURED DIMENSIONS ONLY

Legend

Rail Network Line

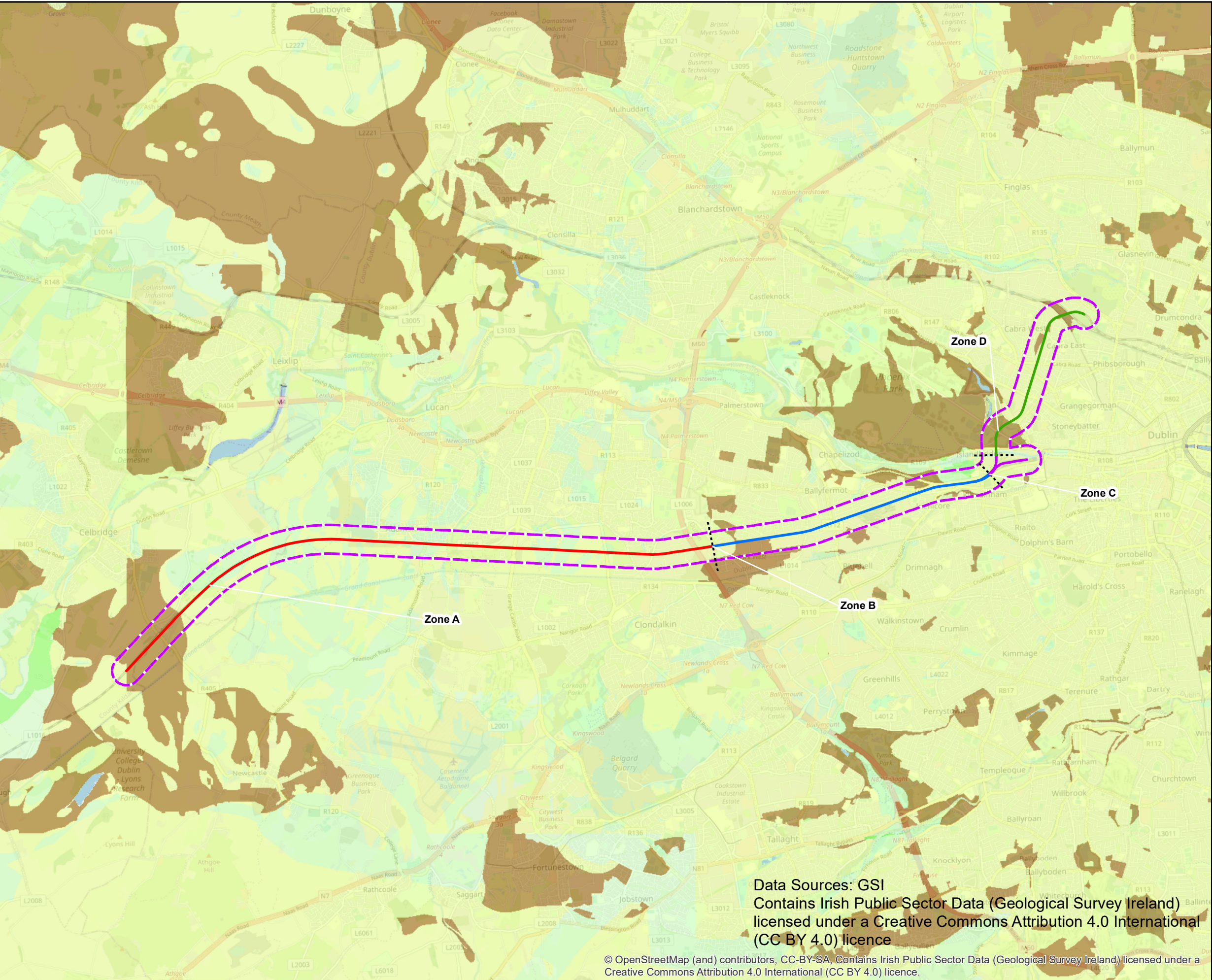
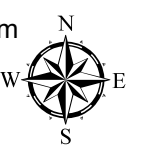
Zone

- Zone A: from Hazelhatch & Celbridge Station to Park West & Cherry Orchard Station
- Zone B: Park Wet & Cherry Orchard Station to Heuston
- Zone C: Heuston Station and Yard
- Zone D: From Liffey Bridge to Glasnevin Junction

- Zone Boundaries
- 250m Buffer Zone

Annual Recharge (mm)

- >2000 mm
- 1401-2000 mm
- 1001-1400 mm
- 901-1000 mm
- 801-900 mm
- 701-800 mm
- 601-700 mm
- 551-600 mm
- 501-550 mm
- 451-500 mm
- 401-450 mm
- 351-400 mm
- 301-350 mm
- 251-300 mm
- 201-250 mm
- 151-200 mm
- 101-150 mm
- 51-100 mm
- 1-50 mm
- 0 mm

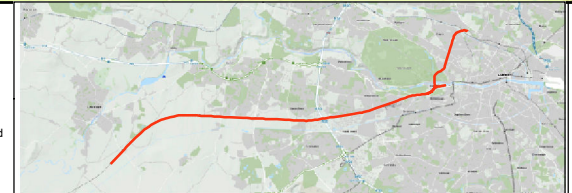


Data Sources: GSI
 Contains Irish Public Sector Data (Geological Survey Ireland)
 licensed under a Creative Commons Attribution 4.0 International
 (CC BY 4.0) licence

© OpenStreetMap (and) contributors, CC-BY-SA, Contains Irish Public Sector Data (Geological Survey Ireland) licensed under a Creative Commons Attribution 4.0 International (CC BY 4.0) licence.

© Irish Rail (2022). This drawing is confidential and the copyright in it is owned by Irish Rail. This drawing must not be either loaned, copied or otherwise reproduced in whole or in part or used for any purpose without the prior permission of Irish Rail.

© Ordnance Survey Ireland and government of Ireland. All O.S. Data used for plans are printed under: "Copyright Ordnance Survey Ireland" Survey No. 0038722. (OSi Aerial Data or OSi Lidar Data) & Survey No. 2022/OSi_NMA_180 (OSi Vector Data). All elevations are in metres and relate to OSi Geoid Model (OSGM02) Malin Head as defined by existing Project Control. All Co-ordinates are in Irish Transverse Mercator Grid (ITM) as defined by OSi active GPS station Tallaght College (TLLG).



Rev	Date	Drn	Chk'd	App'd	Description
v02	26/10/2022	IP	EH	CR	Groundwater Recharge
v01	31/03/2022	IP	EH	CR	Groundwater Recharge

Client: **Iarnród Éireann Irish Rail**

Date: 01/11/2022 Scale: 1:65,000 @ A3

Project Code: 5195886 Issuer: TTA

Engineering Designer: **ATKINS** (Member of the SNC-Lavalin Group)

Supported by: **RPS**

Drawn: IP Checked: EH Approved: CR

QMS Code: _____

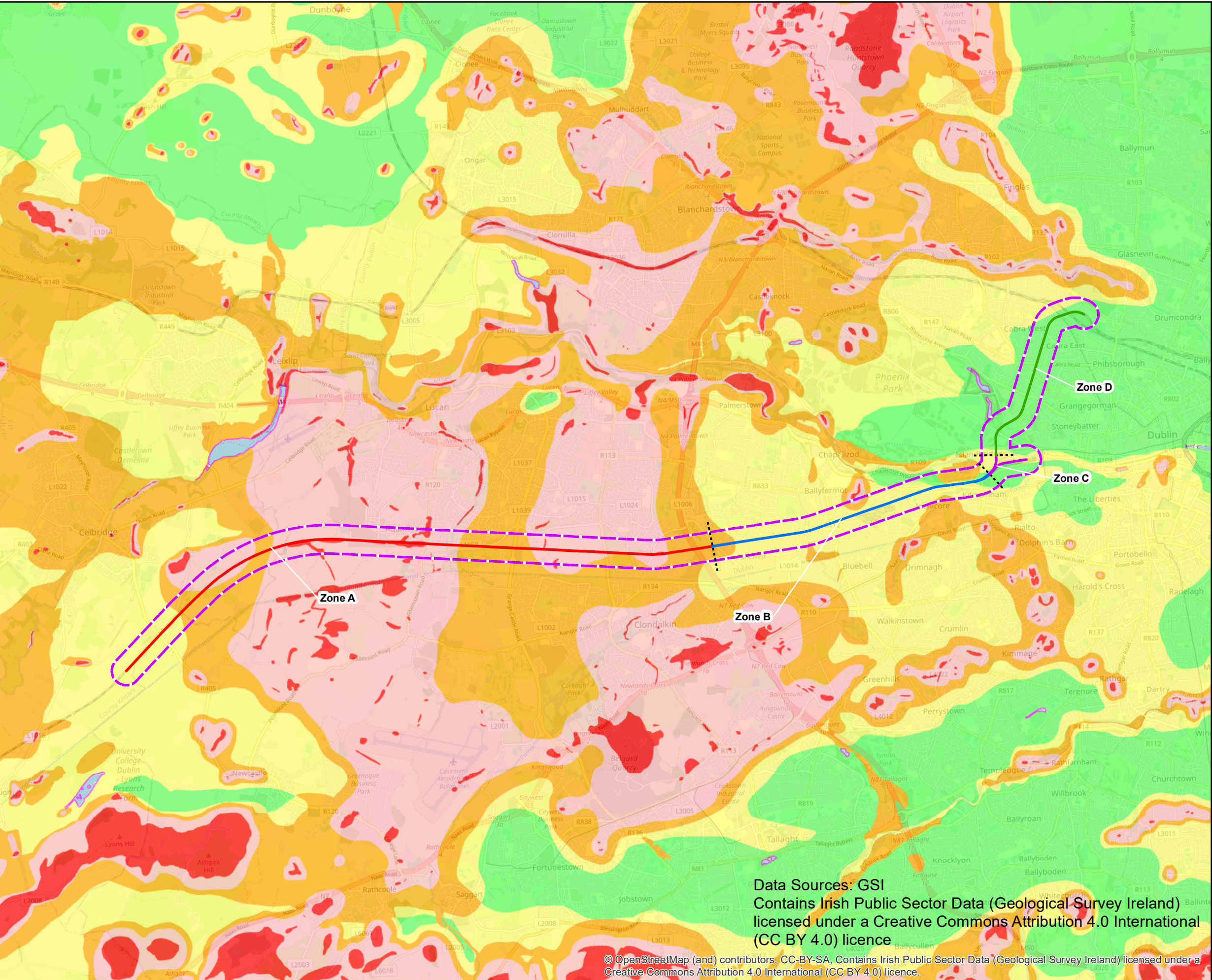
Project Title	DART + SOUTH WEST		
Drawing Title	Figure 11.2: Groundwater Recharge		
Drawing File Name	DP-04-23-DWG-EV-TTA-23747	Version	v02
Status	S3		

DO NOT SCALE USE FIGURED DIMENSIONS ONLY

Legend

Rail Network Line

- Zone**
- Zone A: from Hazelhatch & Celbridge Station to Park West & Cherry Orchard Station
 - Zone B: Park Wet & Cherry Orchard Station to Heuston
 - Zone C: Heuston Station and Yard
 - Zone D: From Liffey Bridge to Glasnevin Junction
 - Zone Boundaries
 - 250m Buffer Zone
 - Rock at or near Surface or Karst
 - Extreme
 - High
 - Moderate
 - Low
 - Water



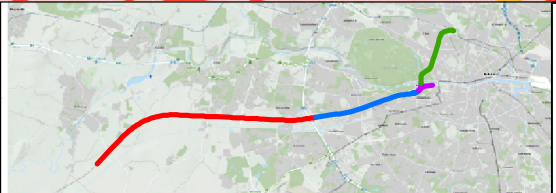
Data Sources: GSI
 Contains Irish Public Sector Data (Geological Survey Ireland)
 licensed under a Creative Commons Attribution 4.0 International
 (CC BY 4.0) licence

© OpenStreetMap (and) contributors, CC-BY-SA, Contains Irish Public Sector Data (Geological Survey Ireland) licensed under a Creative Commons Attribution 4.0 International (CC BY 4.0) licence.



© Irish Rail (2022). This drawing is confidential and the copyright in it is owned by Irish Rail. This drawing must not be either loaned, copied or otherwise reproduced in whole or in part or used for any purpose without the prior permission of Irish Rail.

© Ordnance Survey Ireland and government of Ireland. All O.S Data used for plans are printed under: "Copyright Ordnance Survey Ireland" Survey No. 0039722. (OSi Aerial Data or OSi Lidar Data) & Survey No. 2022/OSi NMA 180 (OSi Vector Data). All elevations are in metres and relate to OSi Geoid Model (OSGM02) Malin Head as defined by existing Project Control. All Co-ordinates are in Irish Transverse Mercator Grid (ITM) as defined by OSi active GPS station Tallaght College (TLLG).



Rev	Date	Drn	Chk'd	App'd	Description
v02	26/10/2022	IP	EH	CR	Groundwater Vulnerability
v01	31/03/2022	IP	EH	CR	Groundwater Vulnerability

Client: **Iarnród Éireann Irish Rail**

Engineering Designer: **ATKINS** (Member of the SNC-Lavalin Group), supported by **RPS**

Date: 08/11/2022 | Scale: 1:65,000 @ A3

Project Code: 5195886 | Issuer: TTA

Drawn: IP | Checked: EH | Approved: CR

QMS Code: _____

Project Title	DART + SOUTH WEST		
Drawing Title	Figure 11.3: Groundwater Vulnerability		
Drawing File Name	DP-04-23-DWG-EV-TTA-23746	Version	v02
Status	S3		

DO NOT SCALE USE FIGURED DIMENSIONS ONLY

Legend

Rail Network Line

Zone

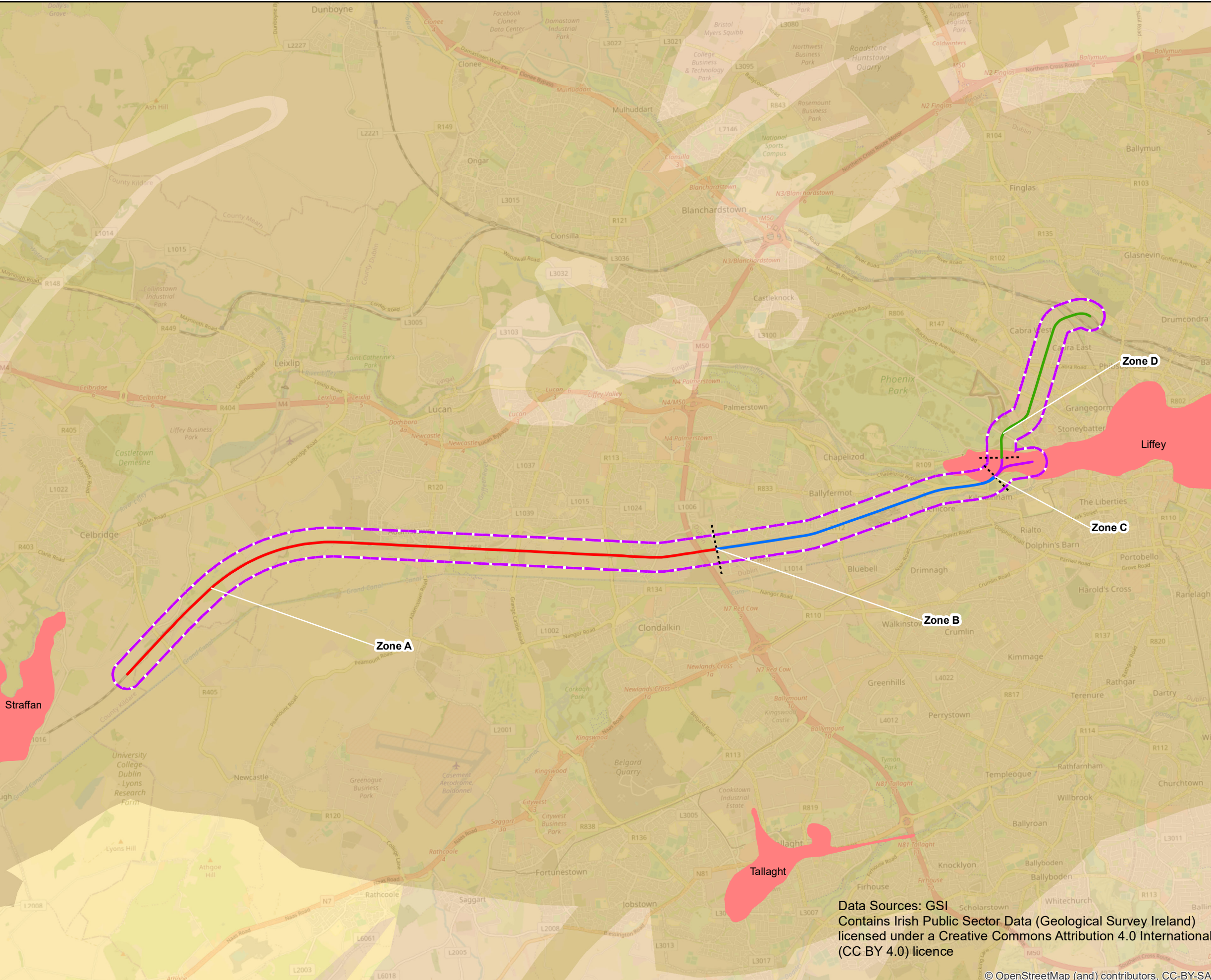
- Zone A: from Hazelhatch & Celbridge Station to Park West & Cherry Orchard Station
- Zone B: Park West & Cherry Orchard Station to Heuston
- Zone C: Heuston Station and Yard
- Zone D: From Liffey Bridge to Glasnevin Junction
- Zone Boundaries
- 250m Buffer Zone

Gravel Aquifer

- Locally important gravel aquifer

Bedrock Aquifer

- LI - Locally Important Aquifer - Bedrock which is Moderately Productive only in Local Zones
- PI - Poor Aquifer - Bedrock which is Generally Unproductive except for Local Zones
- Pu - Poor Aquifer - Bedrock which is Generally Unproductive



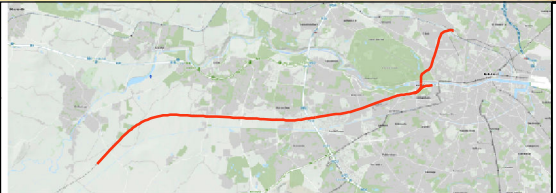
Data Sources: GSI
 Contains Irish Public Sector Data (Geological Survey Ireland)
 licensed under a Creative Commons Attribution 4.0 International
 (CC BY 4.0) licence

© OpenStreetMap (and) contributors, CC-BY-SA



© Irish Rail (2022). This drawing is confidential and the copyright in it is owned by Irish Rail. This drawing must not be either loaned, copied or otherwise reproduced in whole or in part or used for any purpose without the prior permission of Irish Rail.

© Ordnance Survey Ireland and government of Ireland. All O.S. Data used for plans are printed under: "Copyright Ordnance Survey Ireland" Survey No. 0038722. (OSi Aerial Data or OSi Lidar Data) & Survey No. 2022/OSi_NMA_180 (OSi Vector Data). All elevations are in metres and relate to OSi Geoid Model (OSGM02) Malin Head as defined by existing Project Control. All Co-ordinates are in Irish Transverse Mercator Grid (ITM) as defined by OSi active GPS station Tallaght College (TLLG).



Rev	Date	Drn	Chk'd	App'd	Description
v02	26/10/2022	IP	EH	CR	Bedrock and Gravel Aquifers
v01	29/03/2022	IP	EH	CR	Bedrock and Gravel Aquifers

Client: **Iarnród Éireann Irish Rail**

Engineering Designer: **ATKINS** (Member of the SNC-Lavalin Group)

Supported by: **RPS**

Date: 08/11/2022 Scale: 1:65,000 @ A3

Project Code: 5195886 Issuer: TTA

Drawn: IP Checked: EH Approved: CR

QMS Code: _____

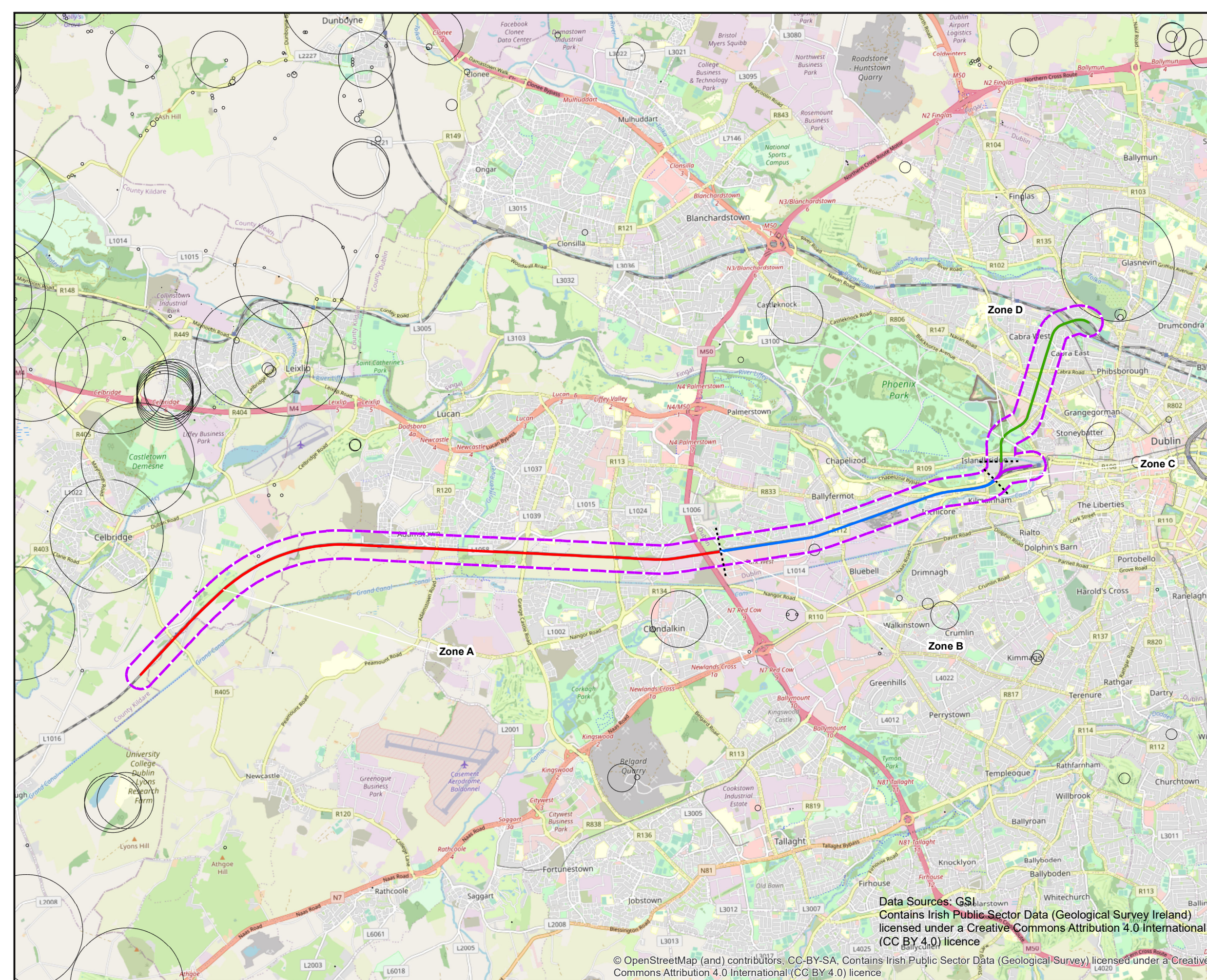
Project Title	DART + SOUTH WEST		
Drawing Title	Figure 11.4: Aquifer Designation		
Drawing File Name	DP-04-23-DWG-EV-TTA-23744	Version	v02
Status	S3		

DO NOT SCALE USE FIGURED DIMENSIONS ONLY

Legend

Rail Network Line

- Zone**
- Zone A: from Hazelhatch & Celbridge Station to Park West & Cherry Orchard Station
 - Zone B: Park Wet & Cherry Orchard Station to Heuston
 - Zone C: Heuston Station and Yard
 - Zone D: From Liffey Bridge to Glasnevin Junction
 - Zone Boundaries
 - 250m Buffer Zone
 - Groundwater Wells and Springs



Data Sources: GSI
 Contains Irish Public Sector Data (Geological Survey Ireland)
 licensed under a Creative Commons Attribution 4.0 International
 (CC BY 4.0) licence



© OpenStreetMap (and) contributors, CC-BY-SA, Contains Irish Public Sector Data (Geological Survey) licensed under a Creative Commons Attribution 4.0 International (CC BY 4.0) licence

© Irish Rail (2022). This drawing is confidential and the copyright in it is owned by Irish Rail. This drawing must not be either loaned, copied or otherwise reproduced in whole or in part or used for any purpose without the prior permission of Irish Rail.

© Ordnance Survey Ireland and government of Ireland. All O.S. Data used for plans are printed under: "Copyright Ordnance Survey Ireland" Survey No. 0038722. (OSi Aerial Data or OSi Lidar Data) & Survey No. 2022/OSi_NMA_180 (OSi Vector Data). All elevations are in metres and relate to OSi Geoid Model (OSGM02) Malin Head as defined by existing Project Control. All Co-ordinates are in Irish Transverse Mercator Grid (ITM) as defined by OSi active GPS station Tallaght College (TLLG).



Rev	Date	Drn	Chk'd	App'd	Description
v02	26/10/2022	IP	EH	CR	Groundwater Wells and Springs
v01	31/03/2022	IP	EH	CR	Groundwater Wells and Springs

Client Iarnród Éireann Irish Rail		Engineering Designer ATKINS Member of the SNC-Lavalin Group Supported by: RPS	
Date 08/11/2022	Scale 1:65,000 @ A3	Drawn IP	Checked EH
Project Code 5195886	Issuer TTA	Approved CR	

Project Title DART + SOUTH WEST	
Drawing Title Figure 11.5: Groundwater Wells and Springs	
Drawing File Name DP-04-23-DWG-EV-TTA-23748	Version v02
Status S3	

DO NOT SCALE USE FIGURED DIMENSIONS ONLY